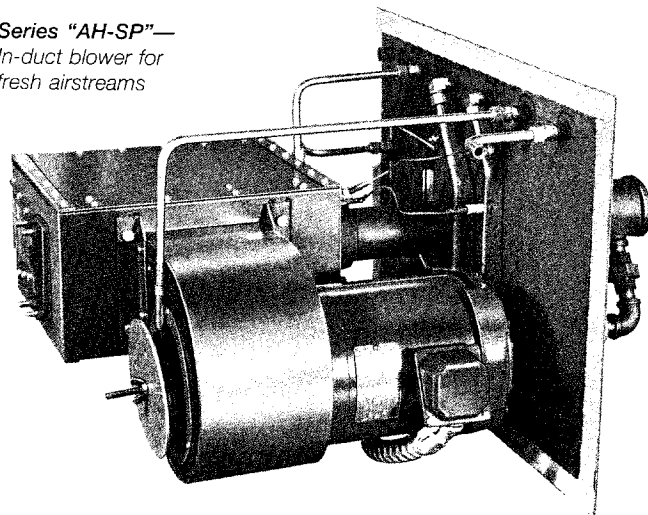


AIR HEAT BURNER SIDE PLATE ASSEMBLIES

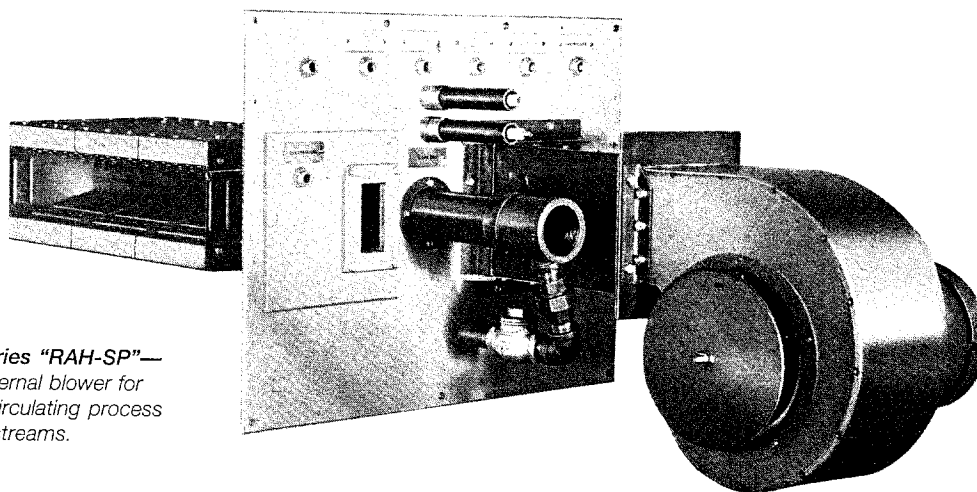
Low NO_x and CO!

- Simplifies mounting.
- 500 to 6000 fpm duct velocity; no profiling required.
- Up to 40: 1 turndown.
- Inputs to 6,400,000 Btu/hr.

Series "AH-SP"—
In-duct blower for
fresh airstreams



Series "RAH-SP"—
External blower for
recirculating process
airstreams.



Eclipse Side Plate Assemblies consist of an industry proven Air Heat Burner pre-piped and mounted on a steel plate for easy installation in a duct wall. All supply connections and pressure taps are conveniently located on the side plate, simplifying system piping and wiring.

Side Plate Assemblies include a burner, integral pilot, ignition plug, flame rod, low fire air bypass with check valve, adjustable pilot cock, and combustion air blower.

Standard Sideplates are designed to fire horizontally with air flow from left to right when facing the gas piping. If necessary, other arrangements can be supplied.

To further simplify installation, Eclipse can supply packaged valve trains for Sideplates. Depending on shipping considerations, valve trains can be factory mounted and pre-wired to a terminal strip or panel. Call Eclipse for assistance in designing a package to suit your needs.

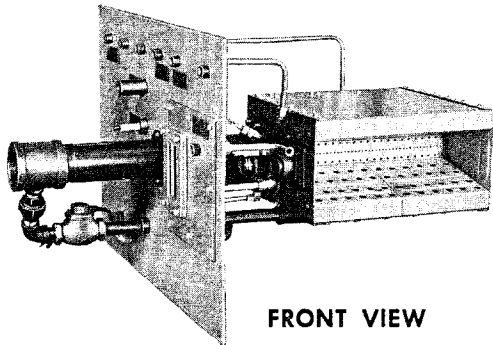
Power Equipment Company
2011 Williamsburg Road
Richmond, Virginia 23231

Phone (804) 236-3800 Fax (804) 236-3882
www.peconet.com sales@peconet.com

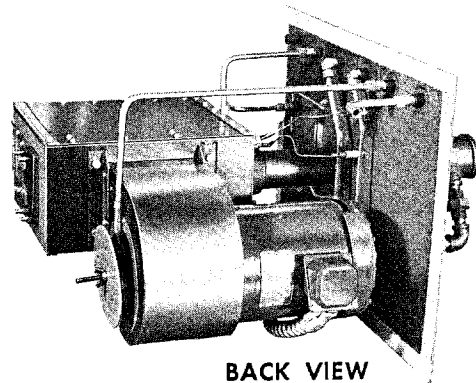
Series "AH-SP" for Fresh Air Systems

Blower Mounted In Duct

Maximum Downstream Air Temp: 1500° F.



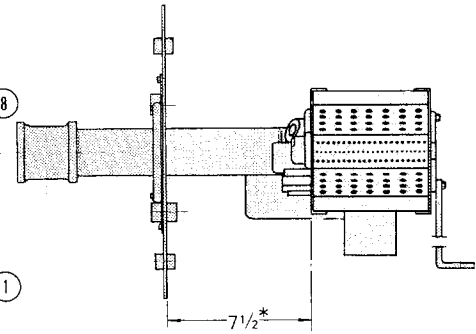
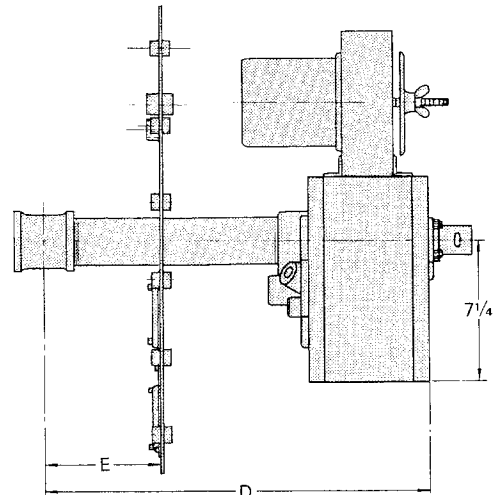
FRONT VIEW



BACK VIEW

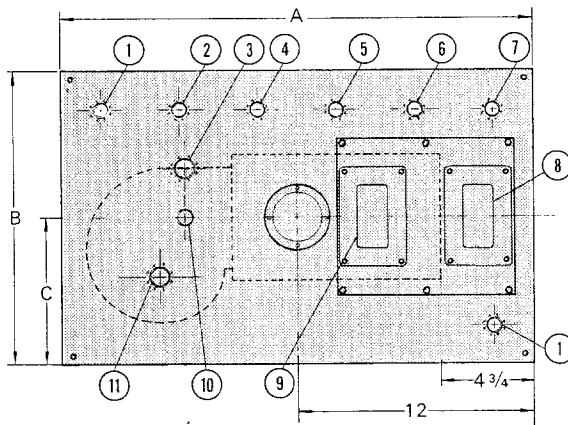
| CATALOG NUMBER | ASSEMBLY NUMBER | CAPACITY - BTU/HR. @800,000 BTU/FT. 24-28" FLAME LENGTH | DIMENSIONS | | | | |
|----------------|-----------------|---|------------|----|---------|---------|--------|
| | | | A | B | C | D | E |
| 40 AH-SP | 111112 | 400,000 | 25-1/2 | 17 | 8-1/2 | 26-5/8 | 7-3/8 |
| 80 AH-SP | 111113 | 800,000 | 25-1/2 | 17 | 8-1/2 | 26-5/8 | 6-7/8 |
| 120 AH-SP | 111114 | 1,200,000 | 25-1/2 | 19 | 9-1/2 | 32-3/4 | 7 |
| 160 AH-SP | 111115 | 1,600,000 | 31 | 19 | 12-5/16 | 38-3/4 | 7 |
| 200 AH-SP | 111116 | 2,000,000 | 31 | 19 | 12-5/16 | 44-7/8 | 7-1/8 |
| 240 AH-SP | 111117 | 2,400,000 | 31 | 19 | 12-5/16 | 50-7/8 | 7-1/8 |
| 280 AH-SP | 111118 | 2,800,000 | 31 | 21 | 13 | 57-1/16 | 7-5/16 |
| 320 AH-SP | 111119 | 3,200,000 | 31 | 21 | 13 | 63-1/16 | 7-5/16 |
| 360 AH-SP | 111120 | 3,600,000 | 34-1/4 | 21 | 13 | 69-1/16 | 7-5/16 |
| 400 AH-SP | 111121 | 4,000,000 | 39-1/2 | 23 | 14 | 75-1/16 | 7-5/16 |
| 440 AH-SP | 111122 | 4,400,000 | 41 | 23 | 14 | 81-1/8 | 7-3/8 |
| 480 AH-SP | 111123 | 4,800,000 | 41 | 23 | 14 | 87-1/8 | 7-3/8 |
| 520 AH-SP | 111124 | 5,200,000 | 43 | 23 | 15-3/16 | 93-1/8 | 7-3/8 |
| 560 AH-SP | 111125 | 5,600,000 | 44-1/2 | 23 | 15-3/16 | 99-1/8 | 7-3/8 |
| 600 AH-SP | 111126 | 6,000,000 | 46 | 23 | 15-3/16 | 105-1/8 | 7-5/8 |
| 640 AH-SP | 111127 | 6,400,000 | 47-1/2 | 23 | 15-3/16 | 111-1/8 | 7-5/8 |

NOTE: All dimensions are in inches.



*This dimension is 13" on 40 AH-SP only.

- CONNECTIONS AVAILABLE FOR:
- ① DUCT AIR FLOW DIFFERENTIAL SWITCH
 - ② COMBUSTION BLOWER SUCTION FAN INLET
 - ③ IGNITION
 - ④ PILOT LOADING AIR PRESSURE
 - ⑤ PILOT GAS
 - ⑥ COMBUSTION AIR SWITCH PRESSURE CONNECTION
 - ⑦ MAIN GAS REGULATOR
 - ⑧ MAIN FLAME OBSERVATION PORT
 - ⑨ PILOT FLAME OBSERVATION PORT
 - ⑩ FLAME LEAD
 - ⑪ MOTOR LEAD WIRES



CAUTION

It is dangerous to use any fuel burning equipment unless it is equipped with suitable flame sensing devices and automatic fuel shut-off valves. Eclipse can supply such equipment or information on alternate sources.

Series "RAH-SP" for Recirculating Process Air Heating Systems

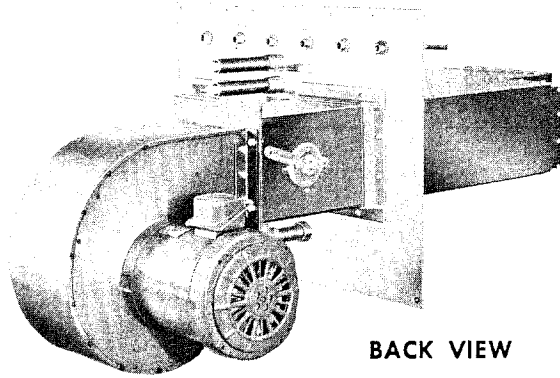
Blower Mounted Outside Duct

Maximum Upstream Air Temp: 750° F.

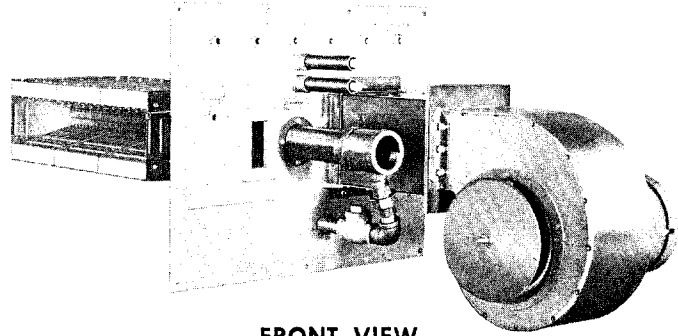
Maximum Downstream Air Temp: 1500° F.

Higher temperatures are possible with specially adapted burners.

Contact your Eclipse representative for details.



BACK VIEW

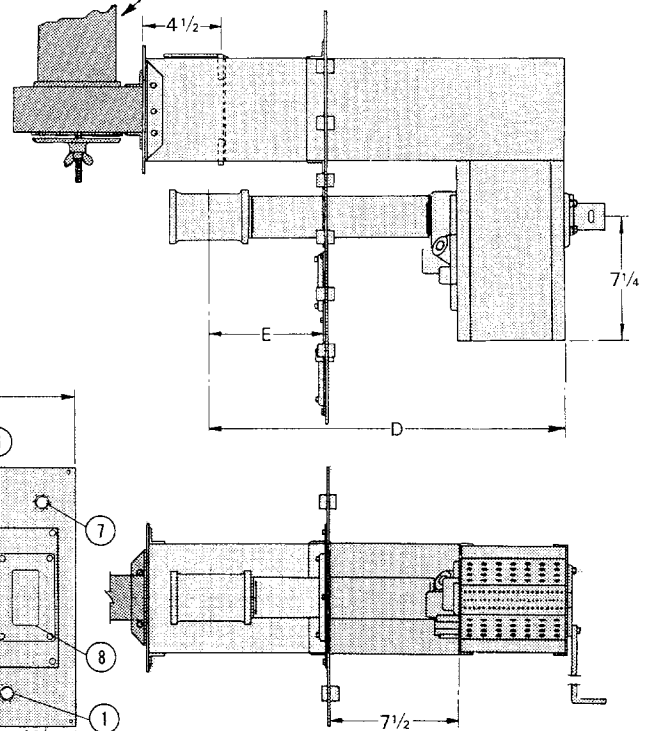


FRONT VIEW

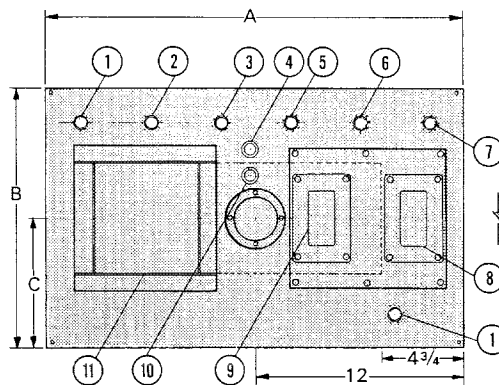
| CATALOG NUMBER | ASSEMBLY NUMBER | CAPACITY - BTU/HR. @800,000 BTU/FT. 24-28" FLAME LENGTH | DIMENSIONS | | | | |
|----------------|-----------------|---|------------|----|--------|---------|--------|
| | | | A | B | C | D | E |
| 40 RAH-SP | 111128 | 400,000 | 25-1/2 | 17 | 8-1/2 | 20-5/8 | 6-7/8 |
| 80 RAH-SP | 111129 | 800,000 | 25-1/2 | 17 | 8-1/2 | 26-5/8 | 6-7/8 |
| 120 RAH-SP | 111130 | 1,200,000 | 25-1/2 | 19 | 9-1/2 | 32-3/4 | 7 |
| 160 RAH-SP | 111131 | 1,600,000 | 31 | 19 | 9-1/2 | 38-3/4 | 7 |
| 200 RAH-SP | 111132 | 2,000,000 | 31 | 19 | 9-1/2 | 44-7/8 | 7-1/8 |
| 240 RAH-SP | 111133 | 2,400,000 | 31 | 19 | 9-1/2 | 50-7/8 | 7-1/8 |
| 280 RAH-SP | 111134 | 2,800,000 | 31 | 21 | 10-1/2 | 57-1/16 | 7-5/16 |
| 320 RAH-SP | 111135 | 3,200,000 | 31 | 21 | 10-1/2 | 63-1/16 | 7-5/16 |
| 360 RAH-SP | 111136 | 3,600,000 | 34-1/4 | 21 | 10-1/2 | 69-1/16 | 7-5/16 |
| 400 RAH-SP | 111137 | 4,000,000 | 39-1/2 | 23 | 11-1/2 | 75-1/16 | 7-5/16 |
| 440 RAH-SP | 111138 | 4,400,000 | 41 | 23 | 11-1/2 | 81-1/8 | 7-3/8 |
| 480 RAH-SP | 111139 | 4,800,000 | 41 | 23 | 11-1/2 | 87-1/8 | 7-3/8 |
| 520 RAH-SP | 111140 | 5,200,000 | 43 | 23 | 11-1/2 | 93-1/8 | 7-3/8 |
| 560 RAH-SP | 111141 | 5,600,000 | 44-1/2 | 23 | 11-1/2 | 99-1/8 | 7-3/8 |
| 600 RAH-SP | 111142 | 6,000,000 | 46 | 23 | 11-1/2 | 105-1/8 | 7-5/8 |
| 640 RAH-SP | 111143 | 6,400,000 | 47-1/2 | 23 | 11-1/2 | 111-1/8 | 7-5/8 |

NOTE: All dimensions are in inches.

THE BLOWER MUST BE PURCHASED SEPARATELY



- CONNECTIONS AVAILABLE FOR:
- ① CIRCULATING DUCT AIR FLOW DIFFERENTIAL SWITCH
 - ② DUCT PRESS. CONNECTION FOR COMBUSTION AIR SUPPLY SWITCH
 - ③ PILOT LOADING AIR PRESSURE
 - ④ IGNITION
 - ⑤ PILOT GAS
 - ⑥ COMBUSTION AIR SWITCH PRESSURE CONNECTION
 - ⑦ MAIN GAS REGULATOR
 - ⑧ MAIN FLAME OBSERVATION PORT
 - ⑨ PILOT FLAME OBSERVATION PORT
 - ⑩ FLAME LEAD
 - ⑪ AIR INLET CONNECTION



Power Equipment Company
2011 Williamsburg Road
Richmond, Virginia 23231

Phone (804) 236-3800 Fax (804) 236-3882
www.peconet.com sales@peconet.com